

Sanitana

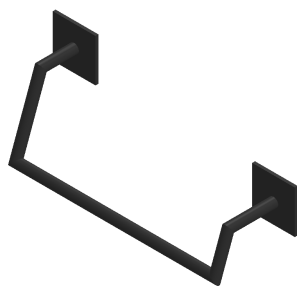
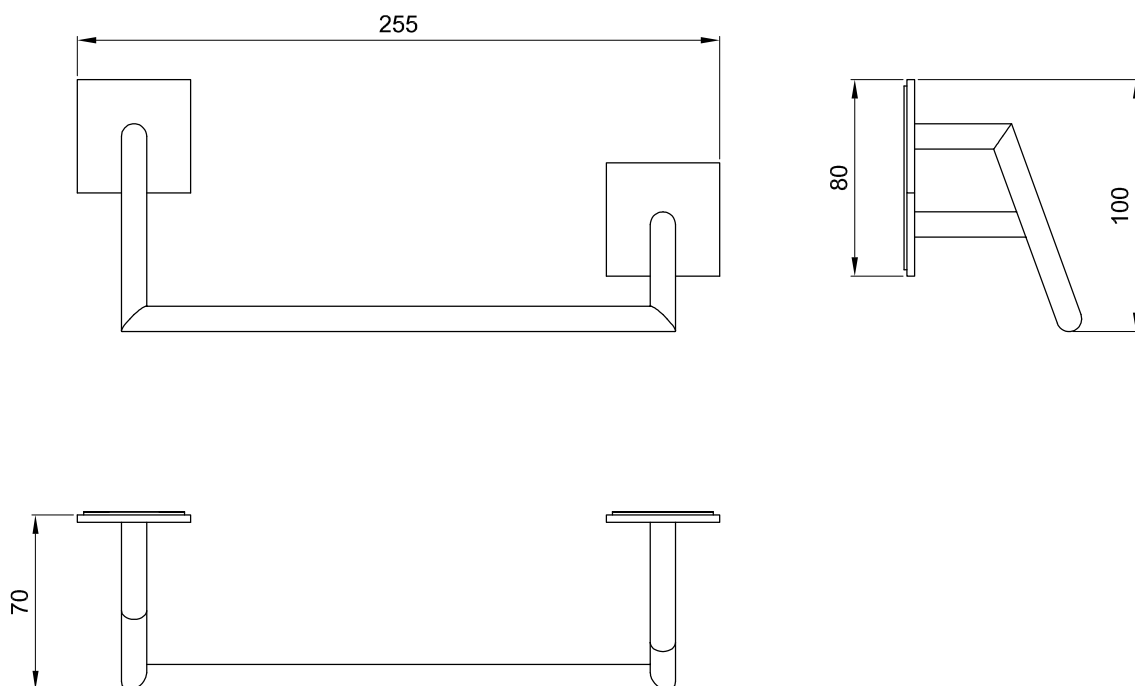
CARACTERÍSTICAS DO MODELO:

- MATERIAL: AÇO INOX (ACABAMENTO: PRETO)
 - AÇO INOX (ACABAMENTO: CROMADO)
 - AÇO INOX (ACABAMENTO: BRANCO MATE)
- GARANTIA: 10 ANOS
- PESO: 0.2KG

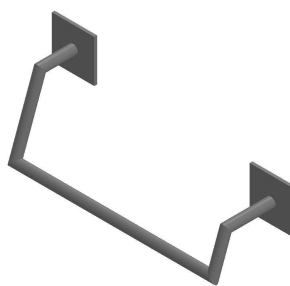
PEÇA:

- DESCRIÇÃO: TOALHEIRO ARGOLA
- SERIE: TWIG
- VERSÃO: MURAL
- REF: S90212000071600 / S90212000012600 / S90212000006400

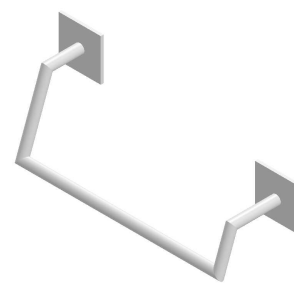
CROQUIS COM DIMENSÕES GERAIS E DE LIGAÇÃO:



S90212000071600



S90212000012600



S90212000006400

COMPONENTES INCLUIDOS:

PRODUTOS ASSOCIADOS:

Os produtos apresentados seguem especificações técnicas internas da Sanitana SA. As dimensões são meramente indicativas. Para instalação à medida apenas devem ser consideradas as dimensões retiradas da peça a ser aplicada. Reservamos o direito de fazer alterações técnicas que permitam melhorar a funcionalidade dos nossos produtos sem aviso prévio.

Sanitana

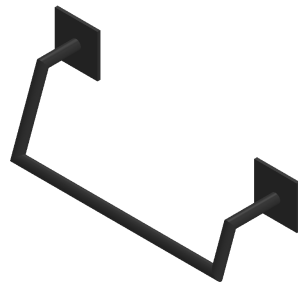
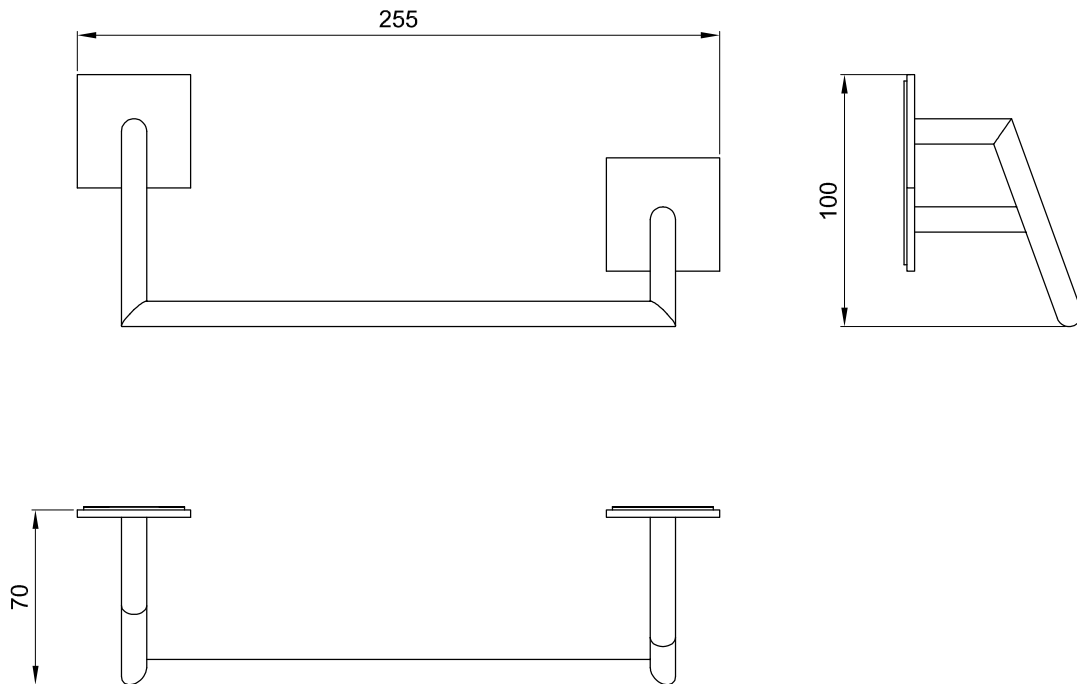
FEATURES OF THE MODEL:

- MATERIAL: STAINLESS STEEL (FINISHING: BLACK)
- STAINLESS STEEL (FINISHING: CHROME)
- STAINLESS STEEL (FINISHING: MATTE WHITE)
- WARRANTY: 10 YEARS
- WEIGHT: 0.2KG

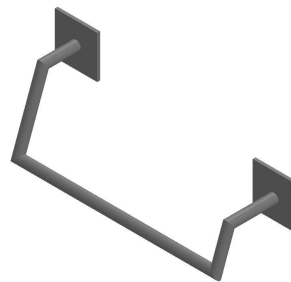
PART:

- DESCRIPTION: TOWEL RING
- SERIES: TWIG
- VERSION: MURAL
- REF: S90212000071600 / S90212000012600 / S90212000006400

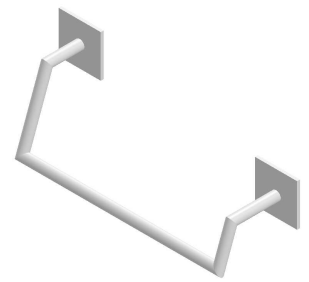
SKETCH WITH DIMENSIONS AND CONNECTIONS:



S90212000071600



S90212000012600



S90212000006400

INCLUDED COMPONENTS:

RELATED PRODUCTS:

The products presented follow technical specifications Sanitana SA. The dimensions are approximate. For installation as only to be considered the dimensions of the part to be removed applied. We reserve the right to make technical changes to improve the functionality of our products without notice.