

Sanitana

CARACTERÍSTICAS DO MODELO:

- MATERIAL: AÇO TERMOLACADO
- KIT DE FIXAÇÃO E CISTERNA DE DUPLA DESCARGA 3/6L
- PROVIDO DE CISTERNA COM ISOLAMENTO ANTI - CONDESAÇÃO
- GARANTIA DE 5 ANOS
- PESO: 11Kg

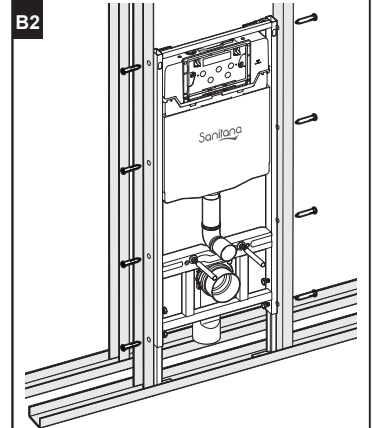
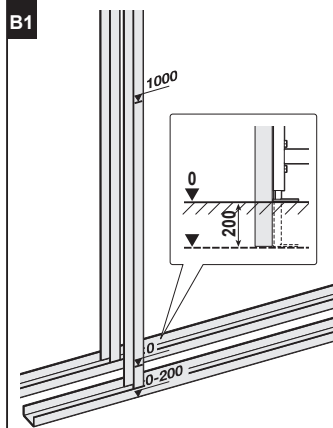
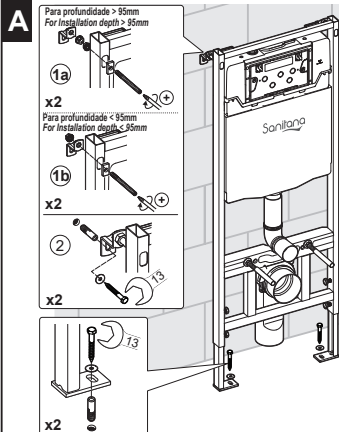
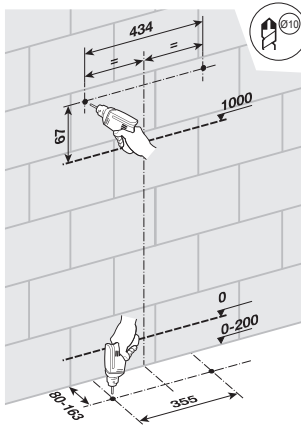
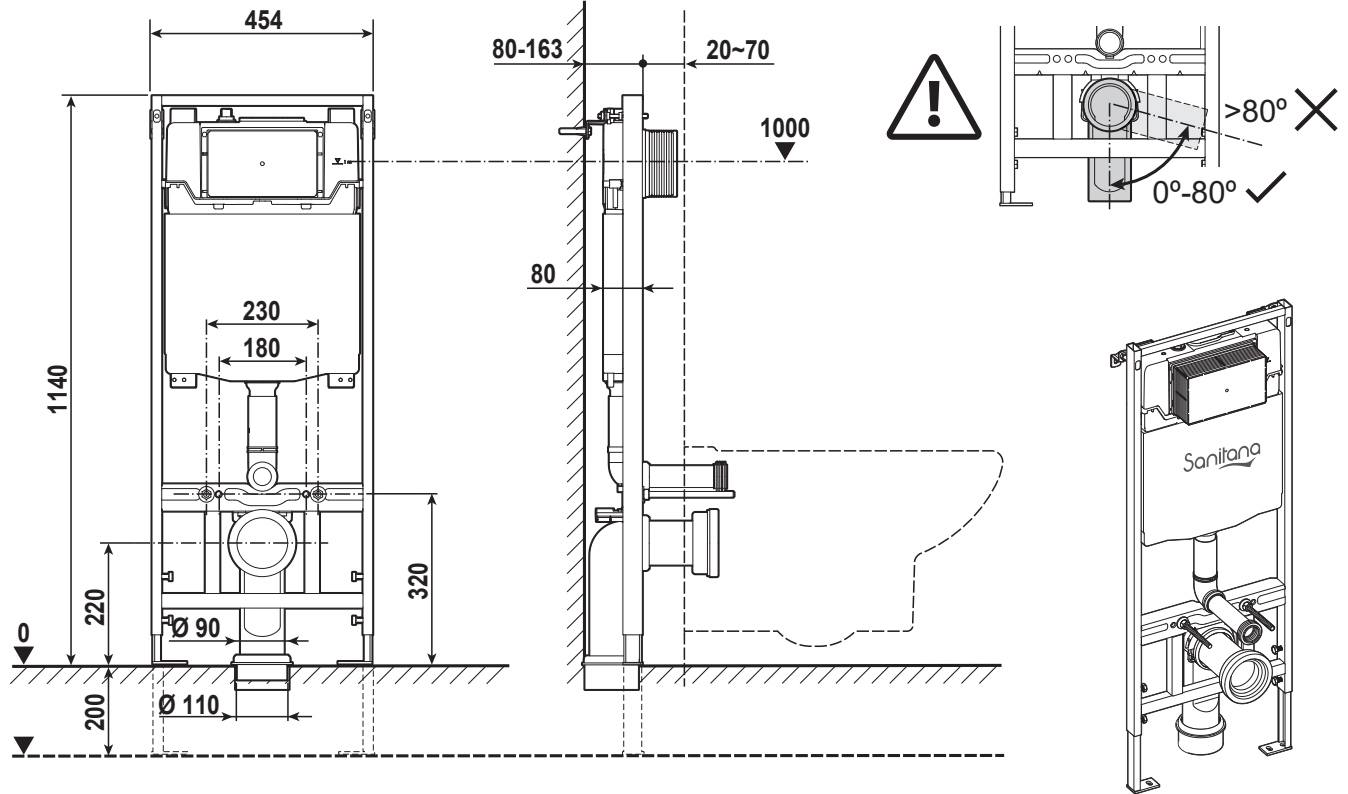


PEÇA:

- DESCRIÇÃO: CONJUNTO STAND-ALONE
- VERSÃO: SANITA SUSPENSA
- REF: SI0202179300000

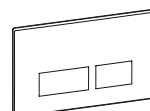
CROQUIS COM DIMENSÕES GERAIS E DE LIGAÇÃO:

[mm]



COMPONENTES INCLUÍDOS:

PRODUTOS ASSOCIADOS:



- SI0202466500000 - BRANCO \ WHITE
- SI0202466511400 - CINZA MATE \ GRAY MATT
- SI0202466512600 - CROMADO \ CHROME
- SI0202466571600 - PRETO MATE \ BLACK MATT

Os produtos apresentados seguem especificações técnicas internas da Sanitana SA. As dimensões são meramente indicativas. Para instalação à medida apenas devem ser consideradas as dimensões retiradas da peça a ser aplicada. Reservamos o direito de fazer alterações técnicas que permitam melhorar a funcionalidade dos nossos produtos sem aviso prévio.

Sanitana

FEATURES OF THE MODEL:

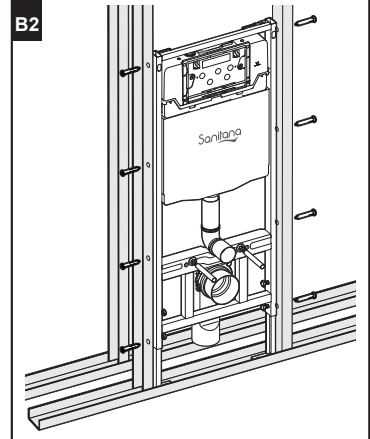
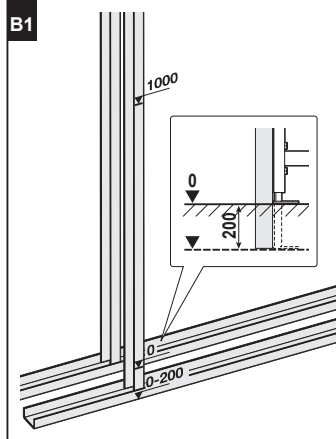
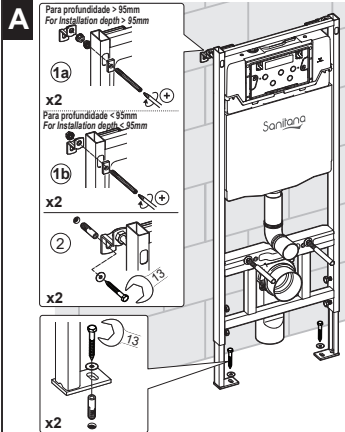
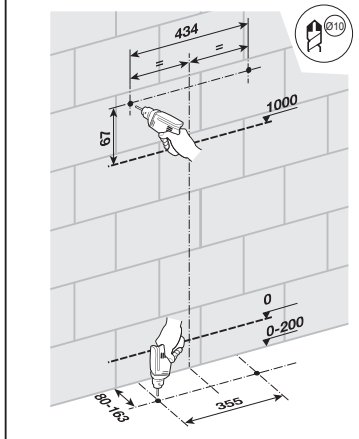
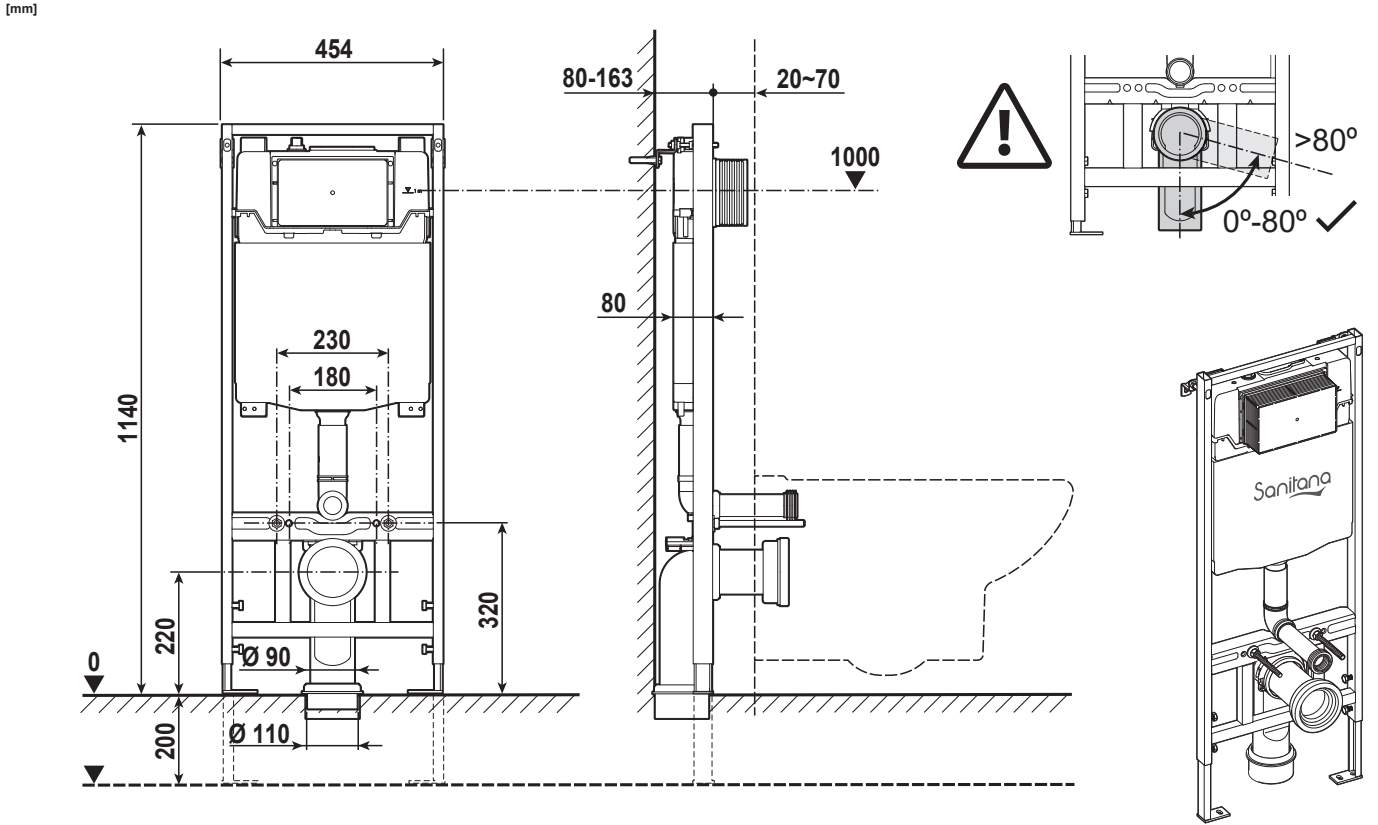
- MATERIAL: THERMOLACQUERED STEEL
- FIXATION ELEMENTS, DUAL FLUSH MECHANISM 3L/6L
- PROVIDE CISTERN WITH ANTI-CONDENSATION ISOLATING
- FIVE YEARS WARRANTY
- WEIGHT: 11Kg



PART:

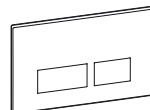
- DESCRIPTION: SET FOR FREESTANDING ASSEMBLY
- VERSION: WALL HUNG TOILET
- REF: SI0202179300000

SKETCH WITH DIMENSIONS AND CONNECTIONS:



INCLUDED COMPONENTS:

RELATED PRODUCTS:



- SI0202466500000 - BRANCO \WHITE
- SI0202466511400 - CINZA MATE \GRAY MATT
- SI0202466512600 - CROMADO \CHROME
- SI0202466571600 - PRETO MATE \BLACK MATT

The products presented follow technical specifications Sanitana SA. The dimensions are approximate. For installation as only to be considered the dimensions of the part to be removed applied. We reserve the right to make technical changes to improve the functionality of our products without notice.